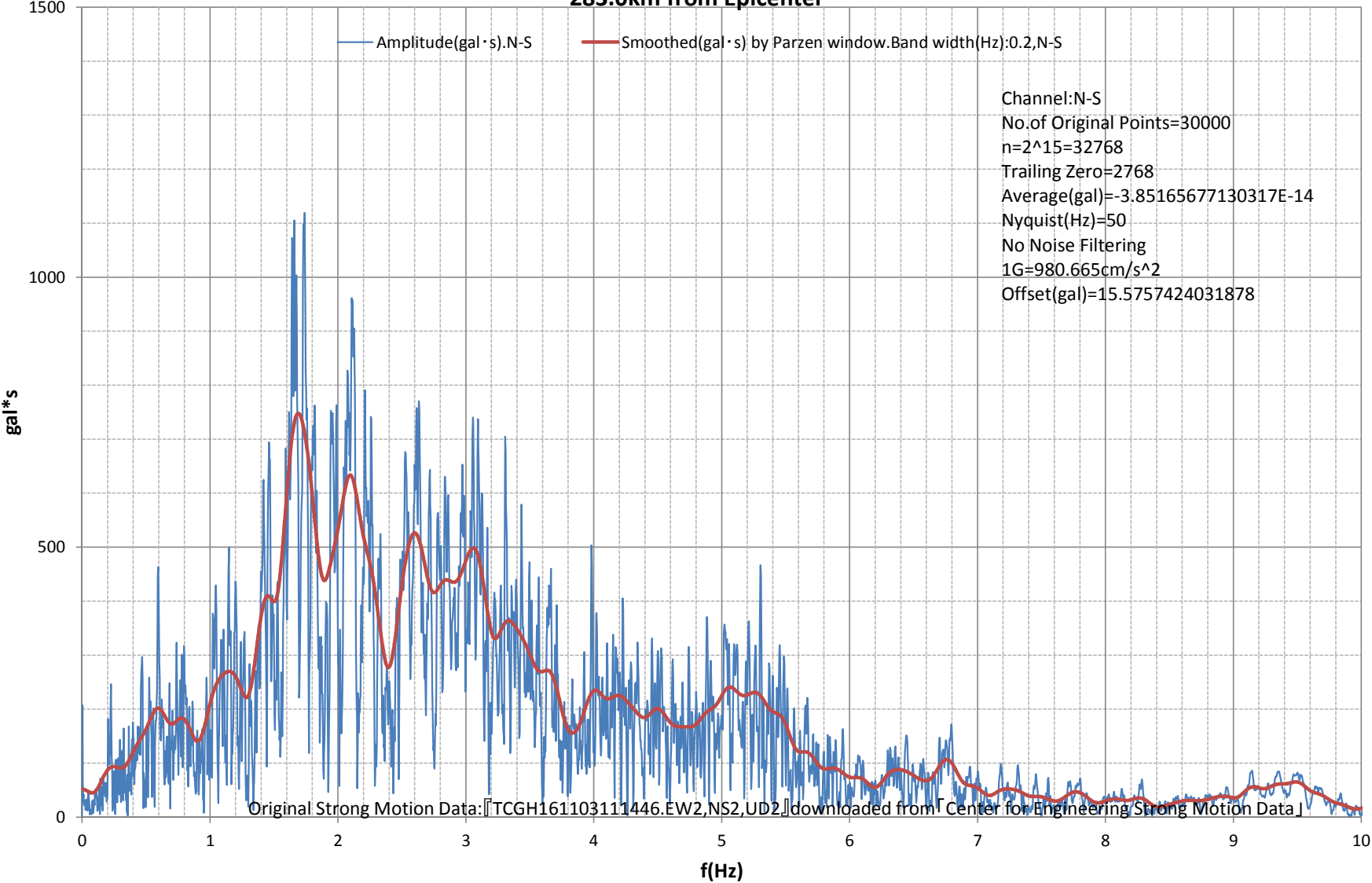
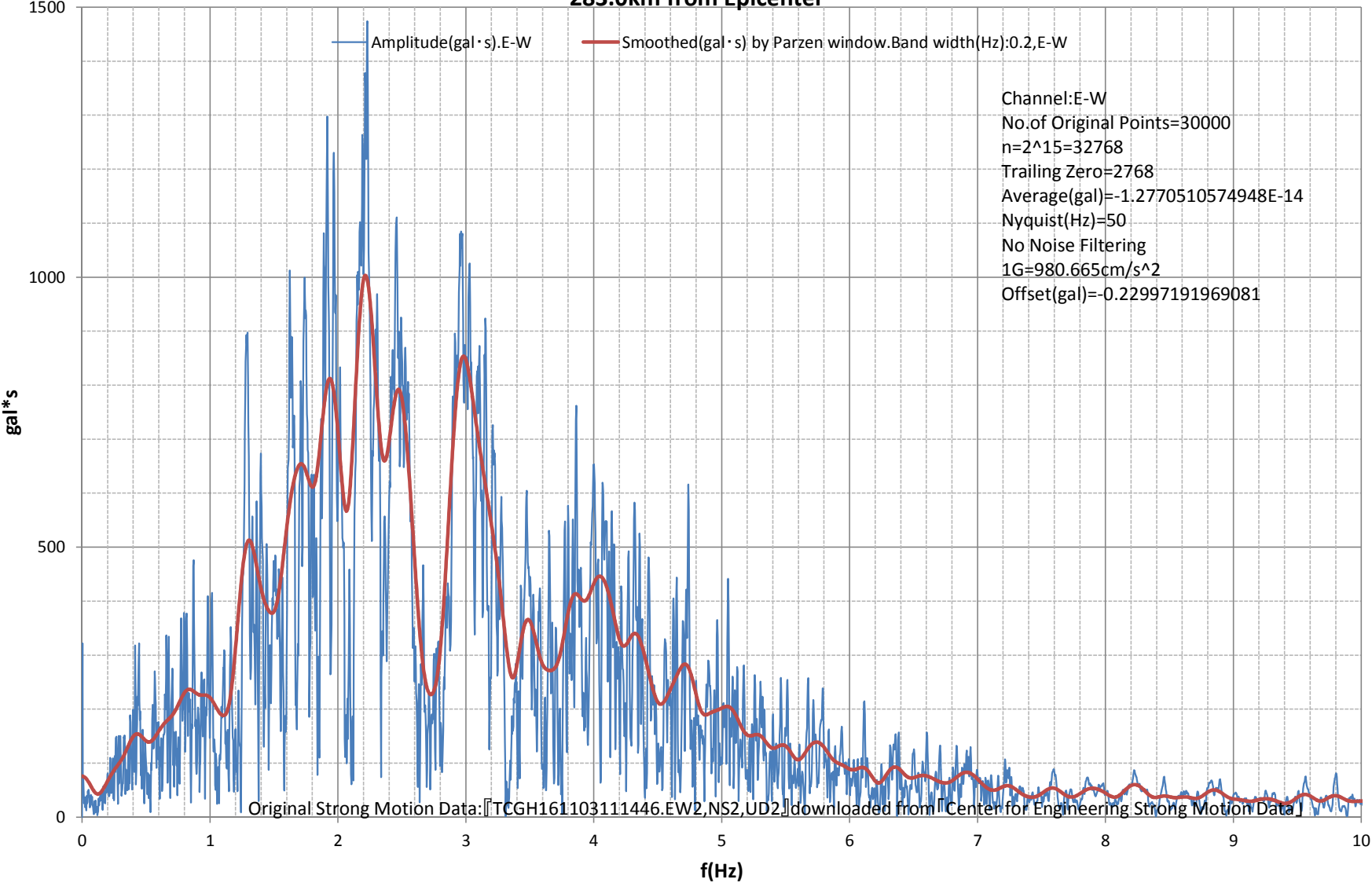


Fourier Amplitude Spectrum:-10(Hz)
M9.0 Japan, Tohoku Earthquake of 11 Mar 2011
Station:HAGA - TCGH16.36.548N,140.0751E.Google Maps URL:<http://g.co/maps/4z3ab>
283.0km from Epicenter



Fourier Amplitude Spectrum:-10(Hz)
M9.0 Japan, Tohoku Earthquake of 11 Mar 2011
Station:HAGA - TCGH16.36.548N,140.0751E.Google Maps URL:<http://g.co/maps/4z3ab>
283.0km from Epicenter



Fourier Amplitude Spectrum:-10(Hz)
M9.0 Japan, Tohoku Earthquake of 11 Mar 2011
Station:HAGA - TCGH16.36.548N,140.0751E.Google Maps URL:<http://g.co/maps/4z3ab>
283.0km from Epicenter

