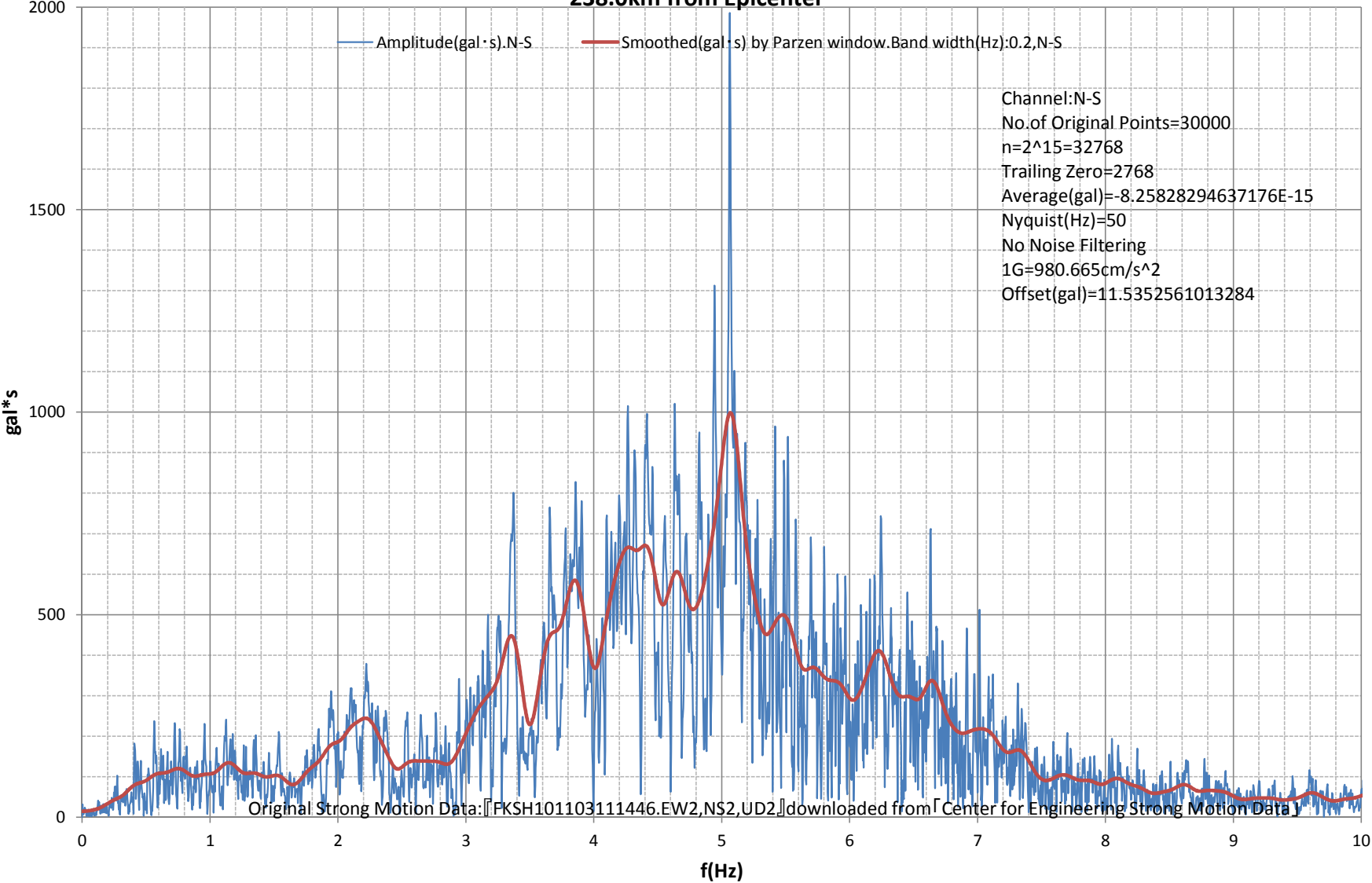
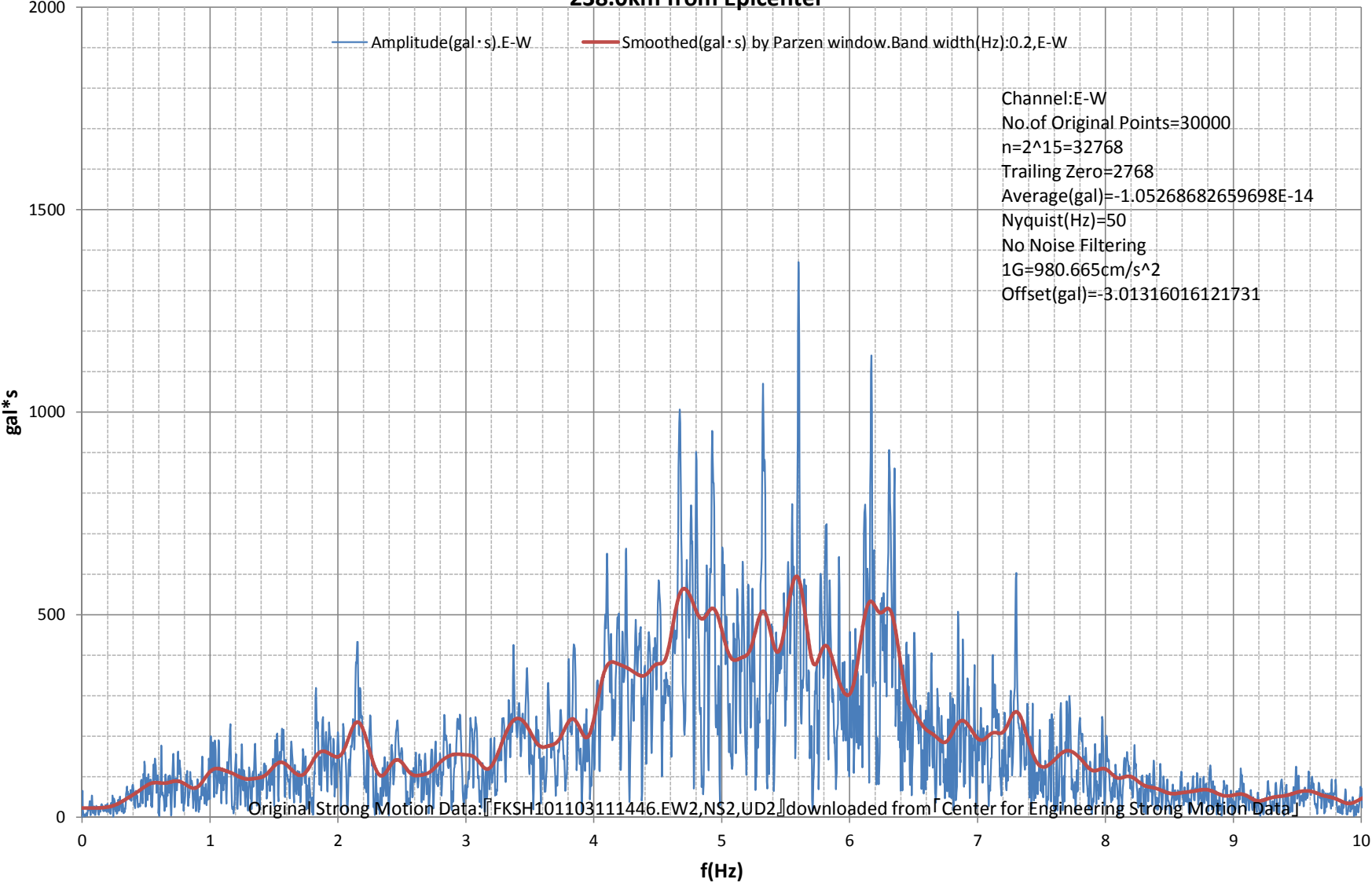


Fourier Amplitude Spectrum:-10(Hz)
M9.0 Japan, Tohoku Earthquake of 11 Mar 2011
Station:NISHIGOU-FKSH10.37.1616N,140.093E.Google Maps URL:<http://g.co/maps/asgwe>
238.0km from Epicenter



Fourier Amplitude Spectrum:-10(Hz)
M9.0 Japan, Tohoku Earthquake of 11 Mar 2011
Station:NISHIGOU-FKSH10.37.1616N,140.093E.Google Maps URL:<http://g.co/maps/asgwe>
238.0km from Epicenter



Fourier Amplitude Spectrum:-10(Hz)
M9.0 Japan, Tohoku Earthquake of 11 Mar 2011
Station:NISHIGOU-FKSH10.37.1616N,140.093E.Google Maps URL:<http://g.co/maps/asgwe>
238.0km from Epicenter

