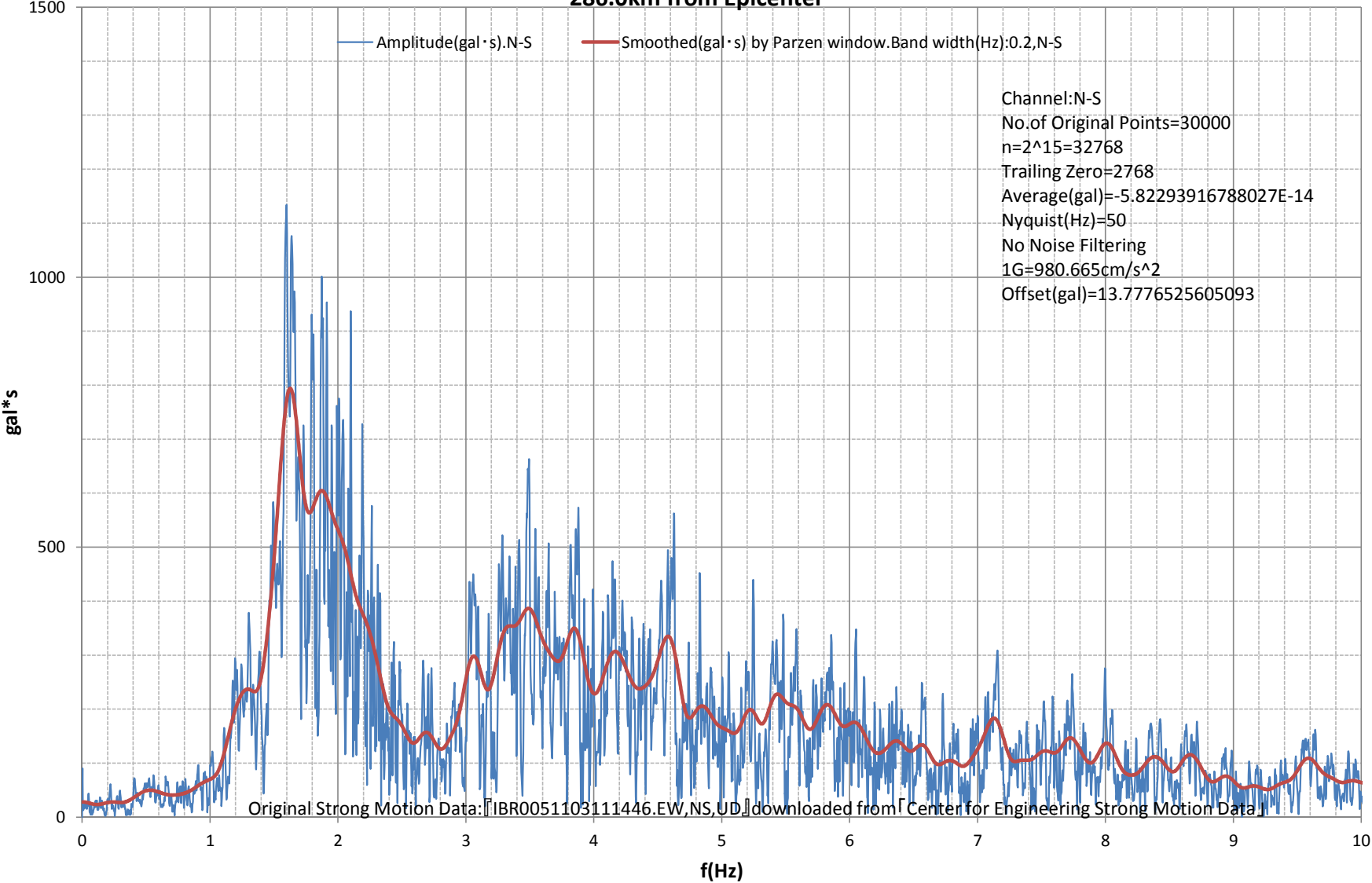
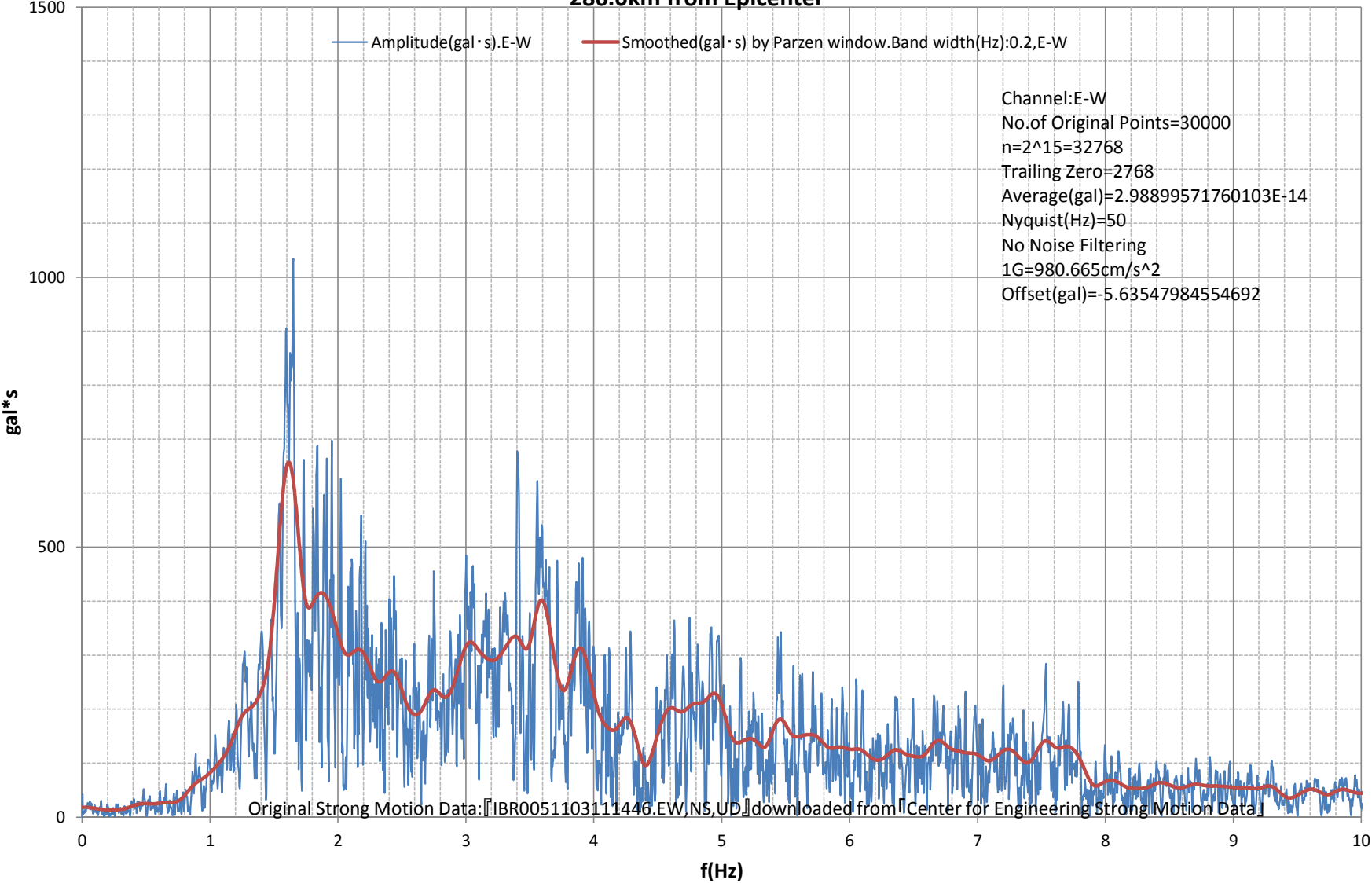


Fourier Amplitude Spectrum:-10(Hz)
M9.0 Japan, Tohoku Earthquake of 11 Mar 2011
Station:KASAMA-IBR005.36.3851N,140.2372E.Google Maps URL:<http://g.co/maps/b4v8w>
286.0km from Epicenter



Fourier Amplitude Spectrum:-10(Hz)
M9.0 Japan, Tohoku Earthquake of 11 Mar 2011
Station:KASAMA-IBR005.36.3851N,140.2372E.Google Maps URL:<http://g.co/maps/b4v8w>
286.0km from Epicenter



Fourier Amplitude Spectrum:-10(Hz)
M9.0 Japan, Tohoku Earthquake of 11 Mar 2011
Station:KASAMA-IBR005.36.3851N,140.2372E.Google Maps URL:<http://g.co/maps/b4v8w>
286.0km from Epicenter

