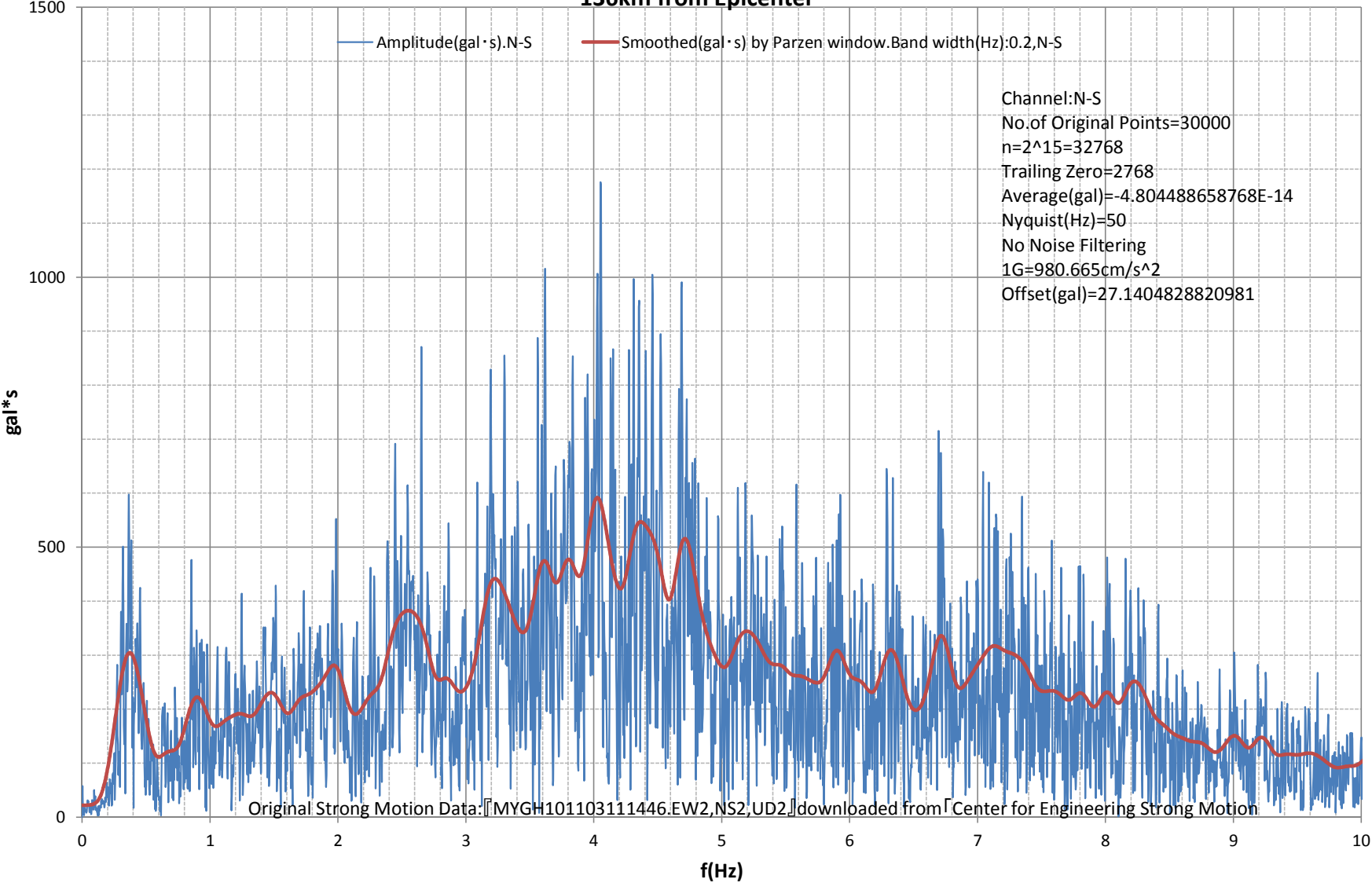
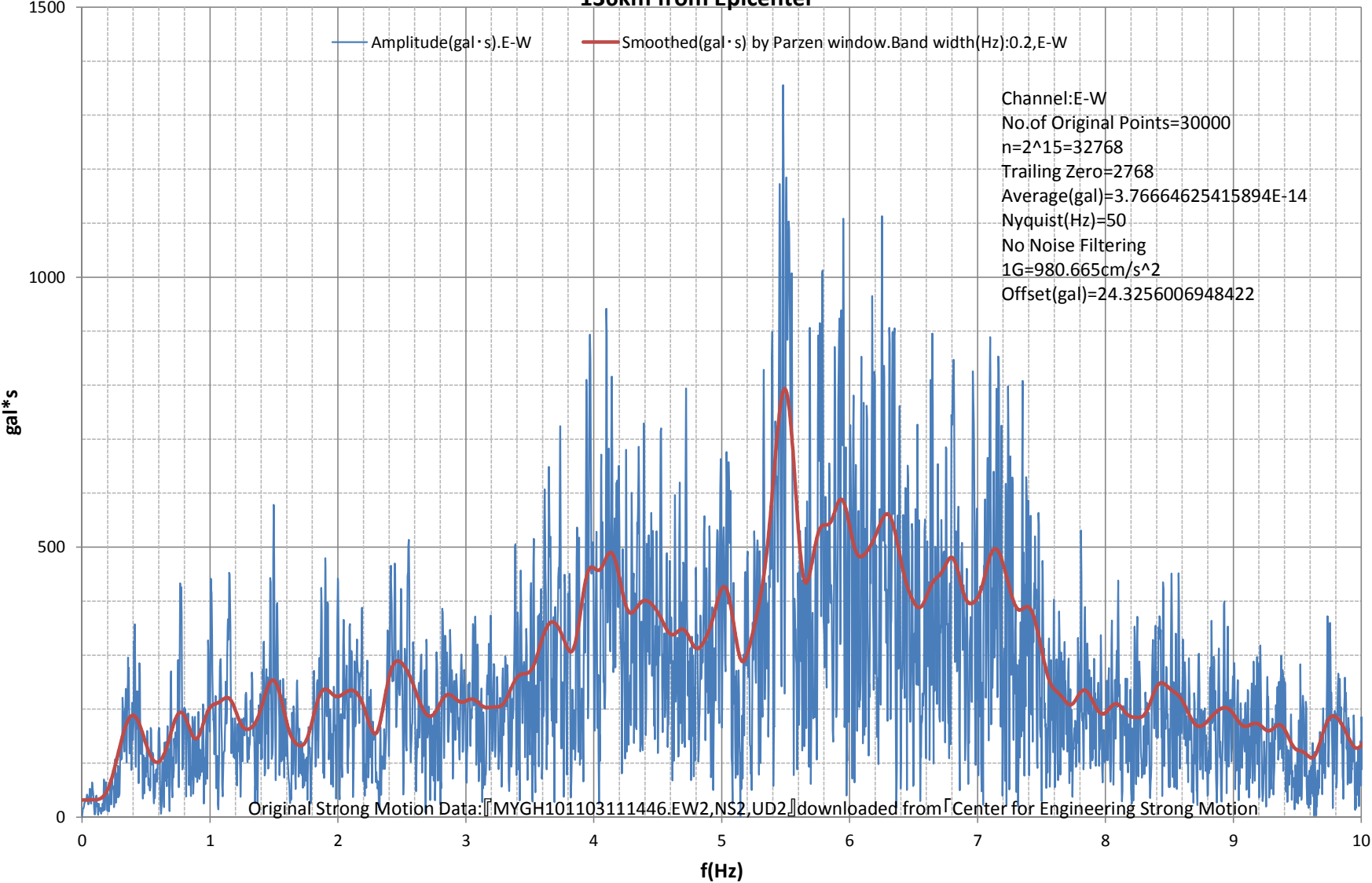


Fourier Amplitude Spectrum:-10(Hz)
M9.0 Japan, Tohoku Earthquake of 11 Mar 2011
Station:YAMAMOTO-MYGH10. 37.9411N,140.8924E.Google Maps URL:<http://g.co/maps/sgfsn>
136km from Epicenter



Fourier Amplitude Spectrum:-10(Hz)
M9.0 Japan, Tohoku Earthquake of 11 Mar 2011
Station:YAMAMOTO-MYGH10. 37.9411N,140.8924E.Google Maps URL:<http://g.co/maps/sgfsn>
136km from Epicenter



Fourier Amplitude Spectrum:-10(Hz)
M9.0 Japan, Tohoku Earthquake of 11 Mar 2011
Station:YAMAMOTO-MYGH10. 37.9411N,140.8924E.Google Maps URL:<http://g.co/maps/sgfsn>
136km from Epicenter

