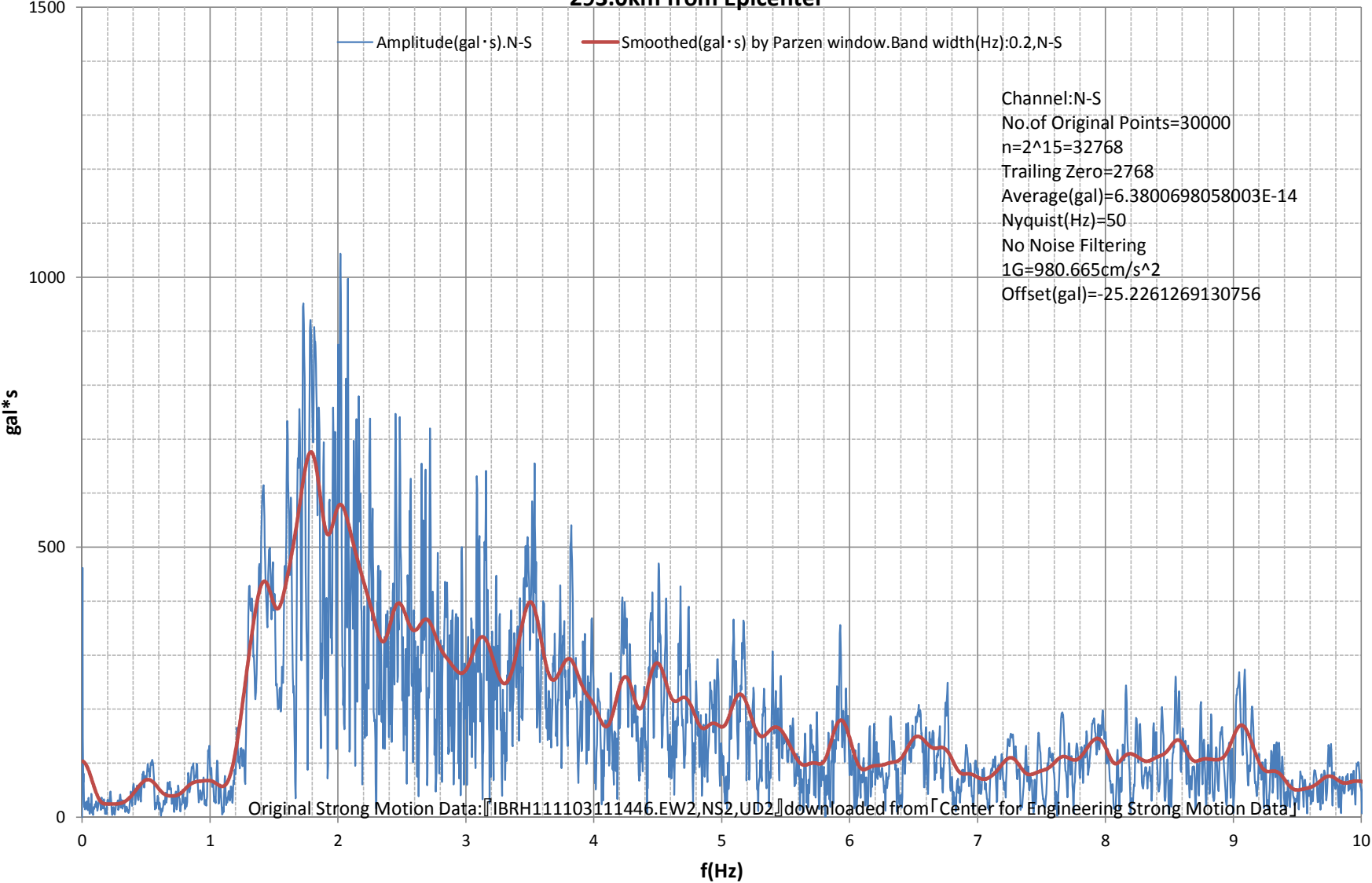
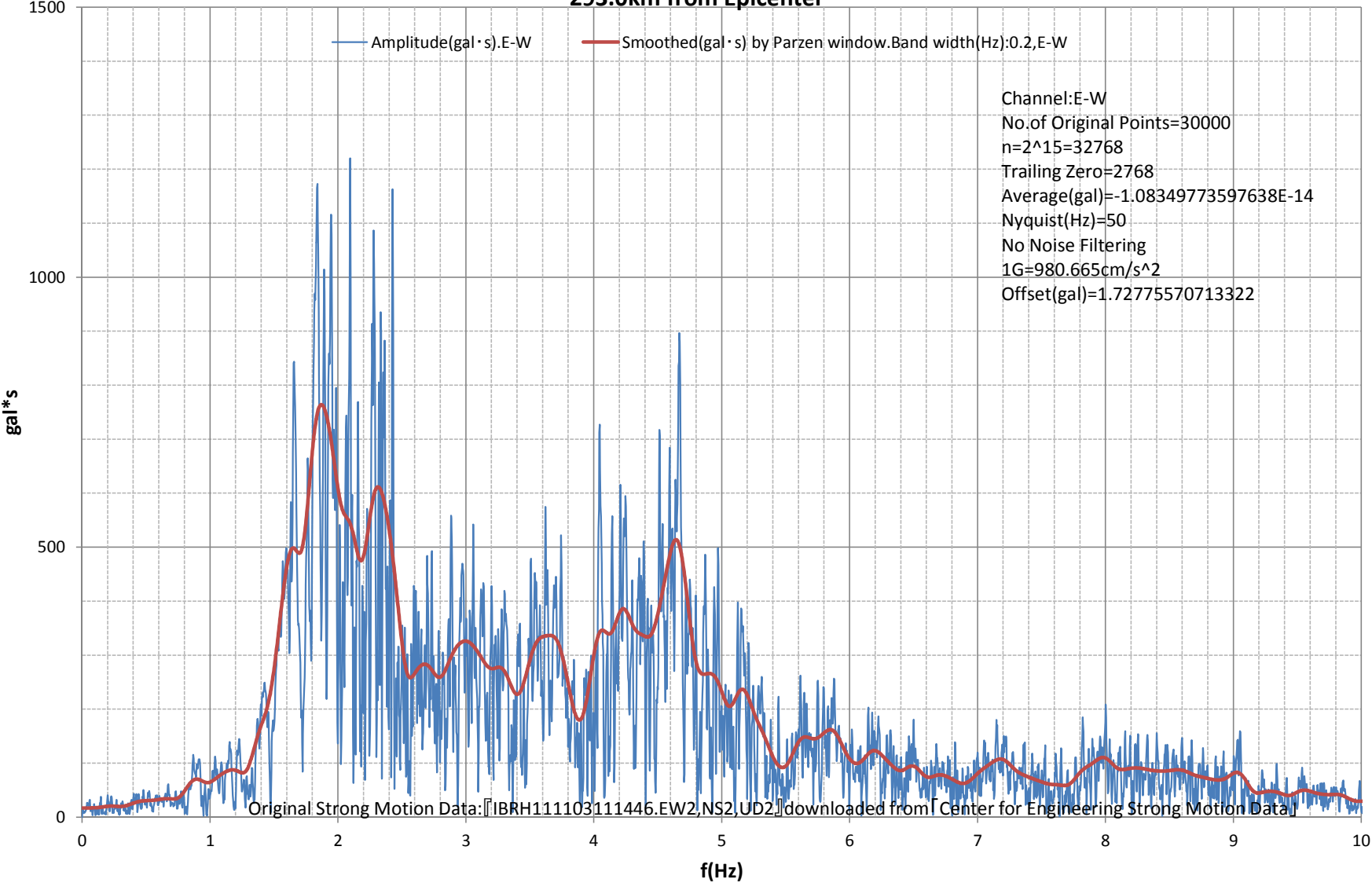


Fourier Amplitude Spectrum:-10(Hz)
M9.0 Japan, Tohoku Earthquake of 11 Mar 2011
Station: IWASE-IBRH11. 36.3701N, 140.1401E. Google Maps URL: <http://g.co/maps/5mm4f>
293.0km from Epicenter



Fourier Amplitude Spectrum:-10(Hz)
M9.0 Japan, Tohoku Earthquake of 11 Mar 2011
Station: IWASE-IBRH11. 36.3701N, 140.1401E. Google Maps URL: <http://g.co/maps/5mm4f>
293.0km from Epicenter



Fourier Amplitude Spectrum:-10(Hz)
M9.0 Japan, Tohoku Earthquake of 11 Mar 2011
Station: IWASE-IBRH11. 36.3701N, 140.1401E. Google Maps URL: <http://g.co/maps/5mm4f>
293.0km from Epicenter

