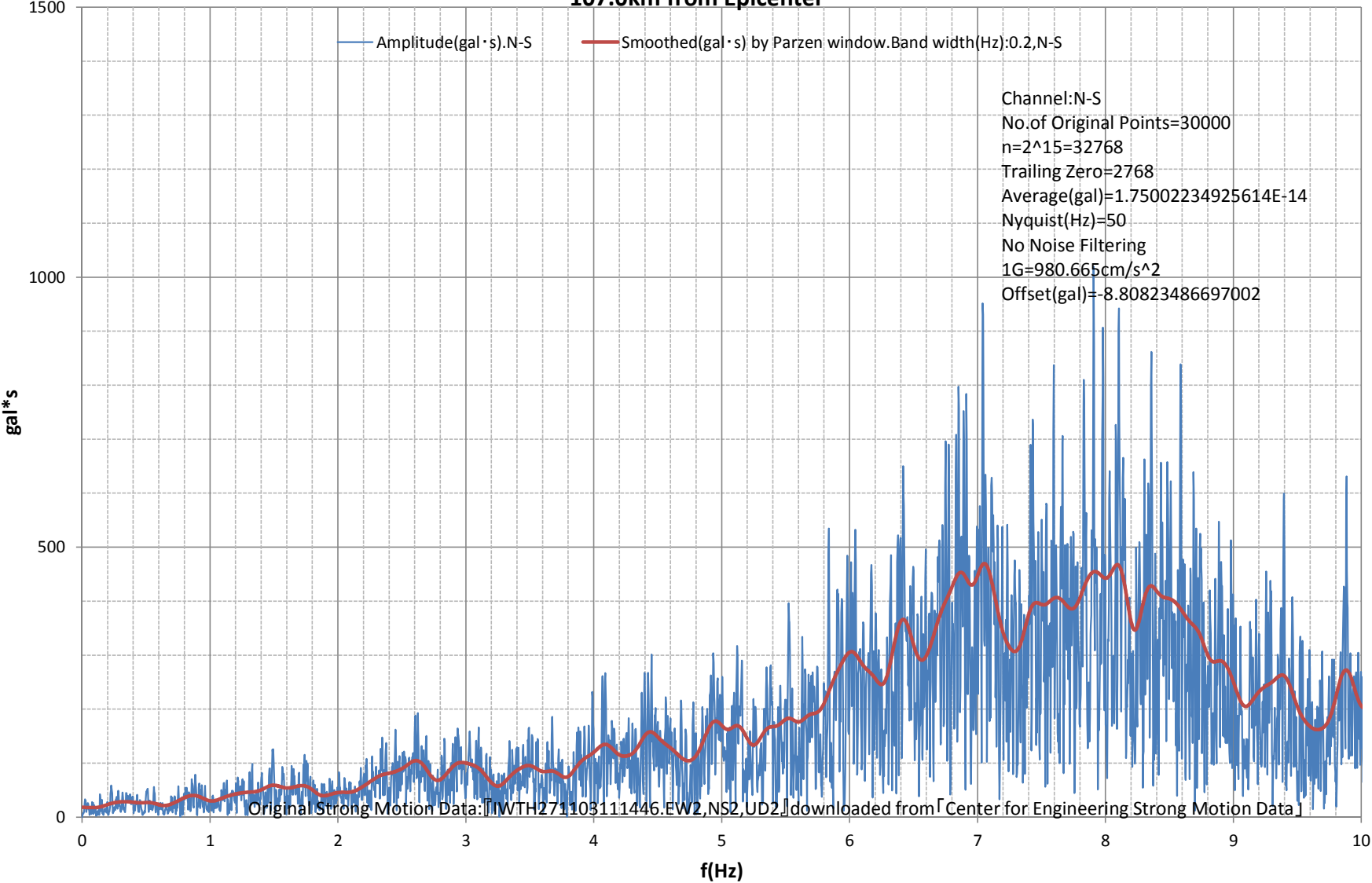
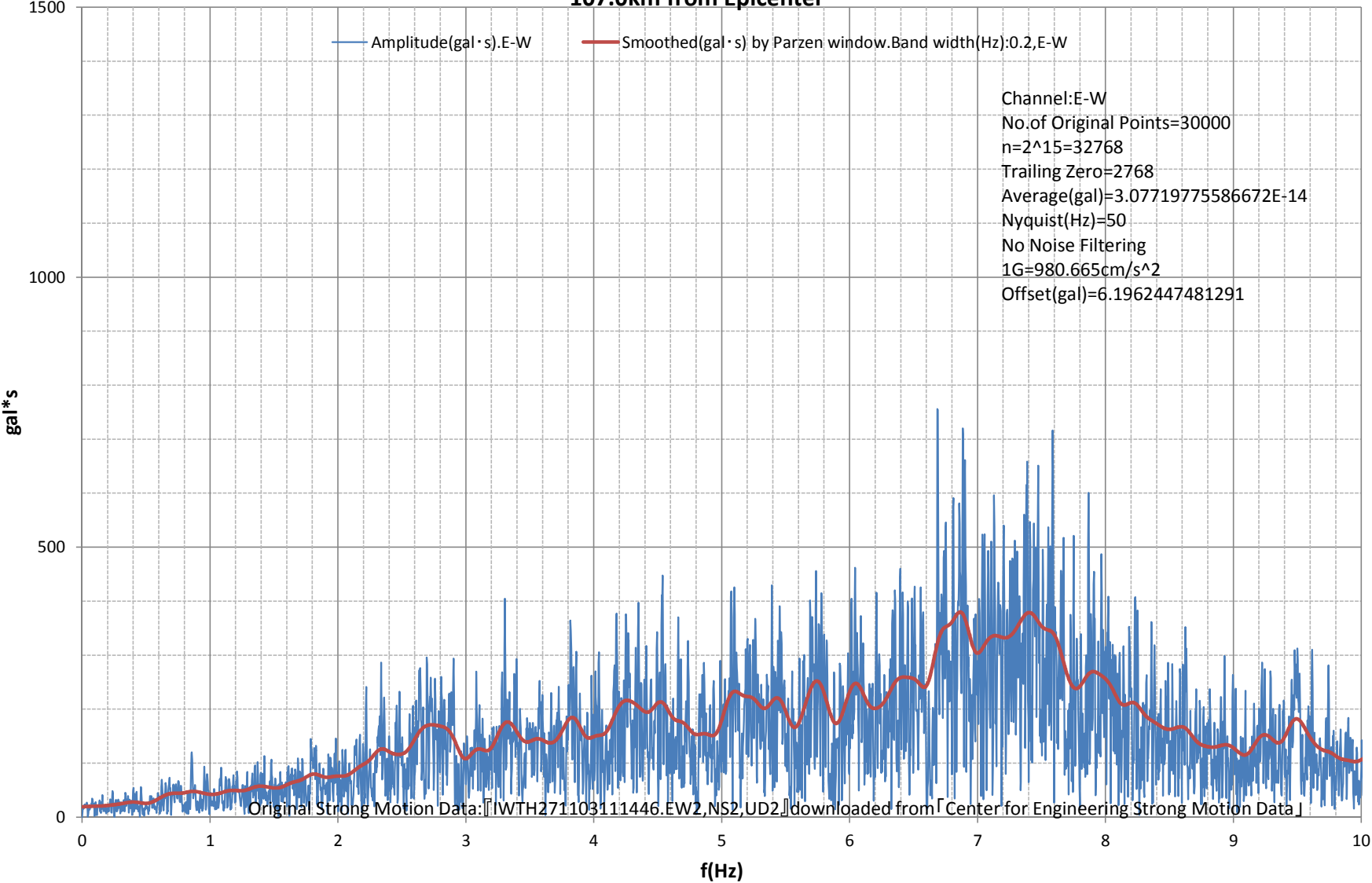


Fourier Amplitude Spectrum:-10(Hz)
M9.0 Japan, Tohoku Earthquake of 11 Mar 2011
Station:RIKUZENTAKATA-IWTH27. 39.0307N,141.532E.Google Maps URL:<http://g.co/maps/qyce8>
107.0km from Epicenter



Fourier Amplitude Spectrum:-10(Hz)
M9.0 Japan, Tohoku Earthquake of 11 Mar 2011
Station:RIKUZENTAKATA-IWTH27. 39.0307N,141.532E.Google Maps URL:<http://g.co/maps/qyce8>
107.0km from Epicenter



Fourier Amplitude Spectrum:-10(Hz)
M9.0 Japan, Tohoku Earthquake of 11 Mar 2011
Station:RIKUZENTAKATA-IWTH27. 39.0307N,141.532E.Google Maps URL:<http://g.co/maps/qyce8>
107.0km from Epicenter

