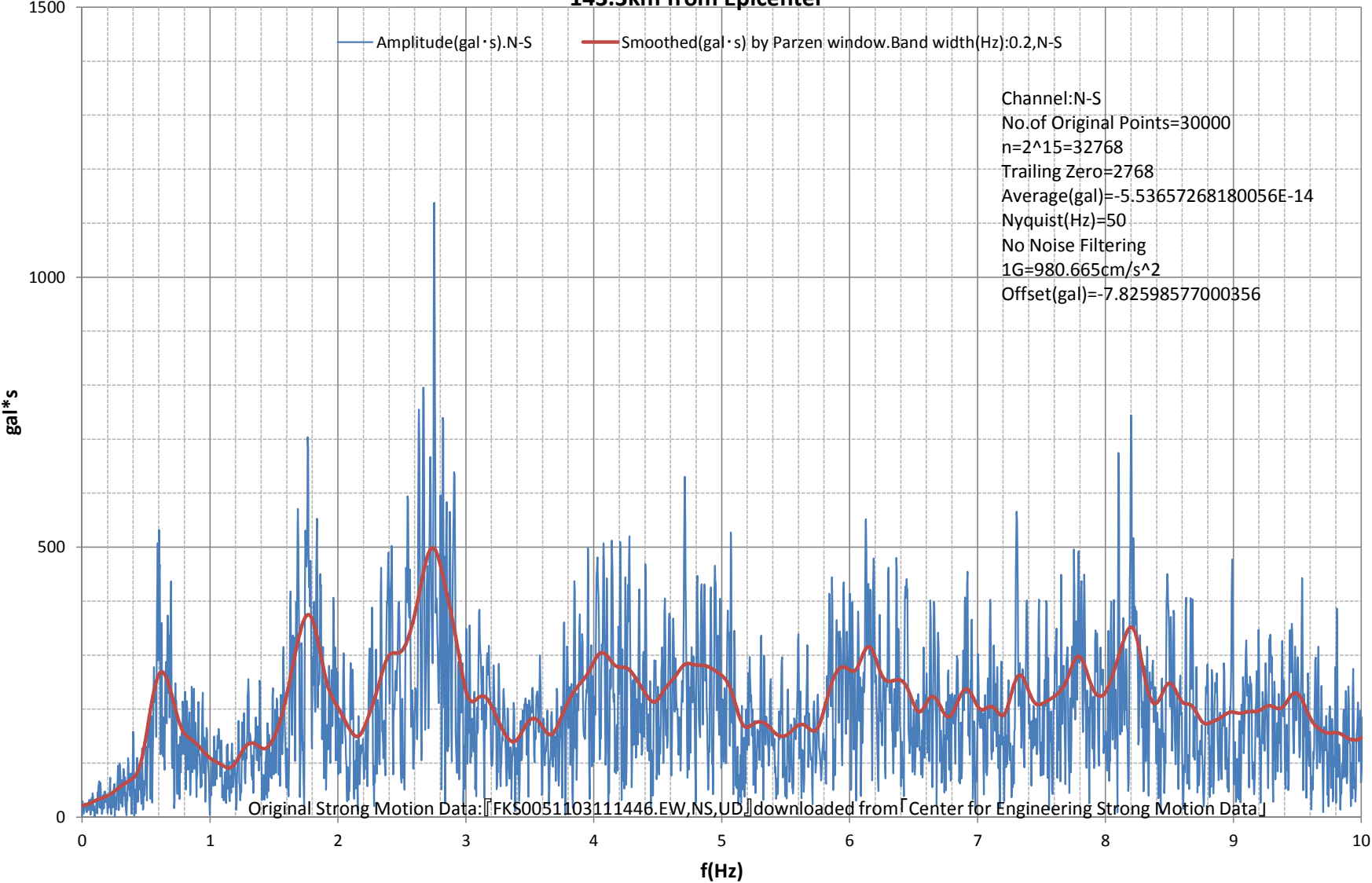
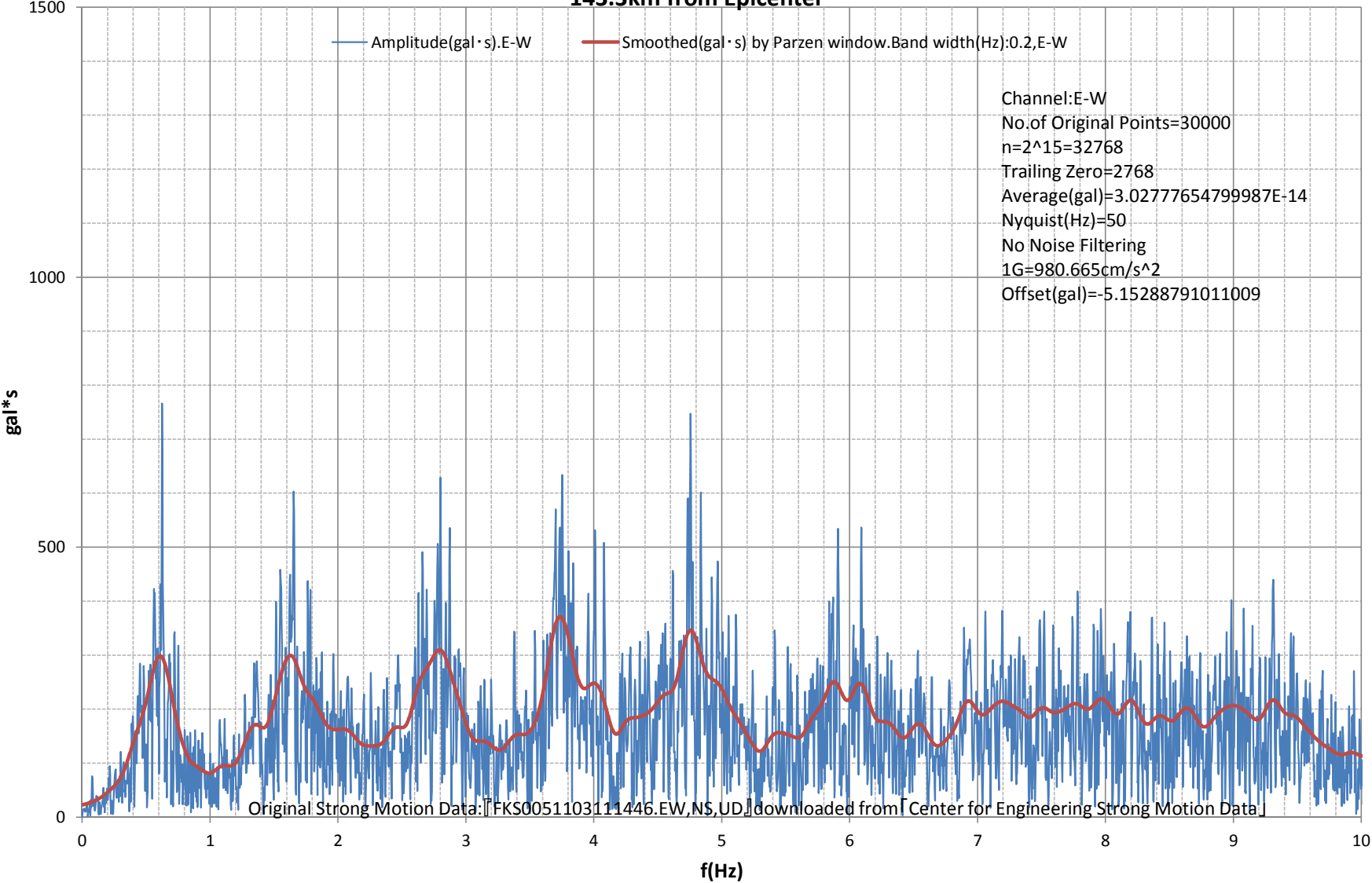


Fourier Amplitude Spectrum:-10(Hz)
M9.0 Japan, Tohoku Earthquake of 11 Mar 2011
Station:HARAMACHI-FKS005. 37.6385N,140.9849E.Google Maps URL:<http://g.co/maps/gfswr>
143.3km from Epicenter



Fourier Amplitude Spectrum:-10(Hz)
M9.0 Japan, Tohoku Earthquake of 11 Mar 2011
Station:HARAMACHI-FKS005. 37.6385N,140.9849E.Google Maps URL:<http://g.co/maps/gfswr>
143.3km from Epicenter



Fourier Amplitude Spectrum:-10(Hz)
M9.0 Japan, Tohoku Earthquake of 11 Mar 2011
Station:HARAMACHI-FKS005. 37.6385N,140.9849E.Google Maps URL:<http://g.co/maps/gfswr>
143.3km from Epicenter

