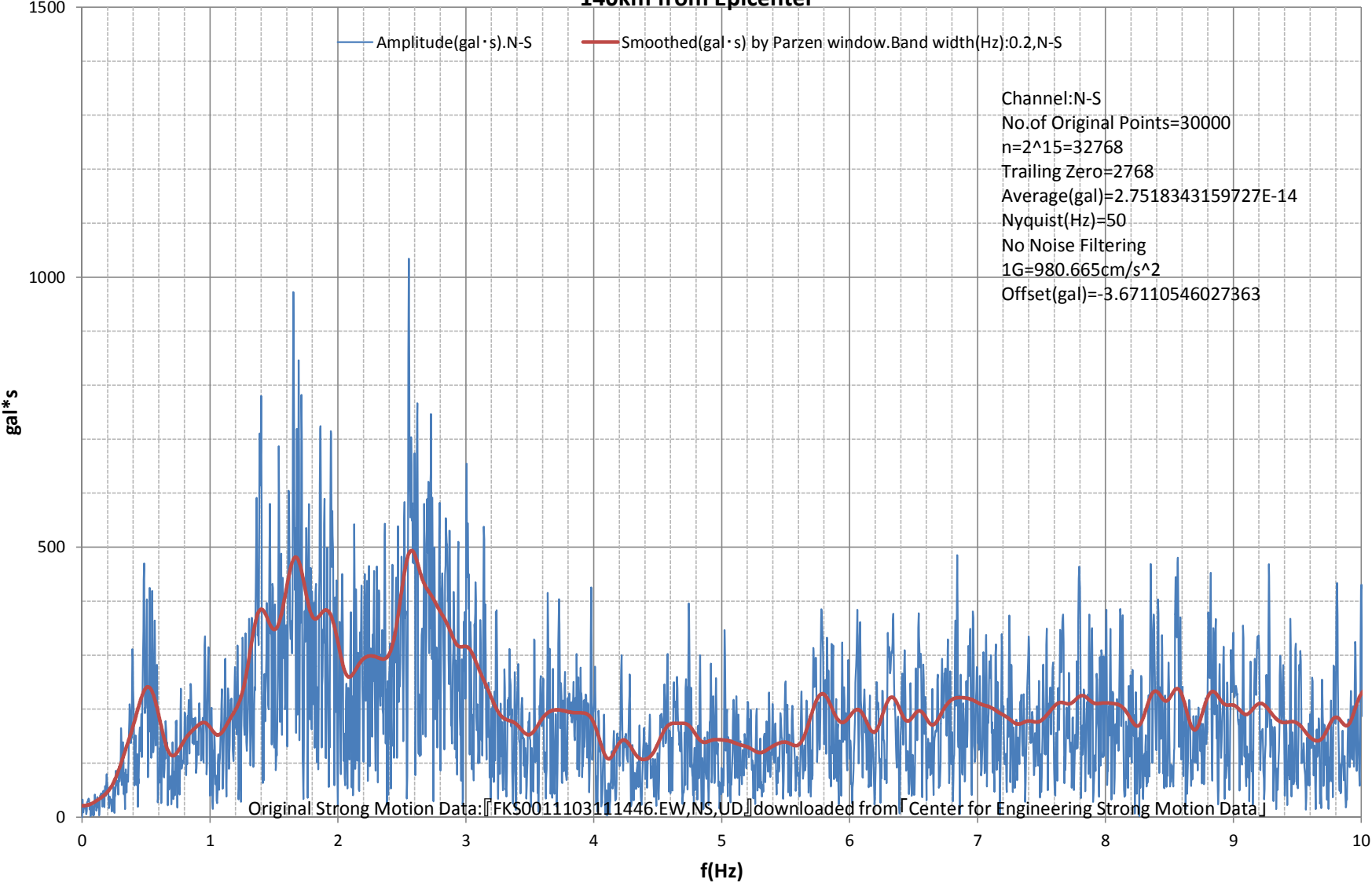
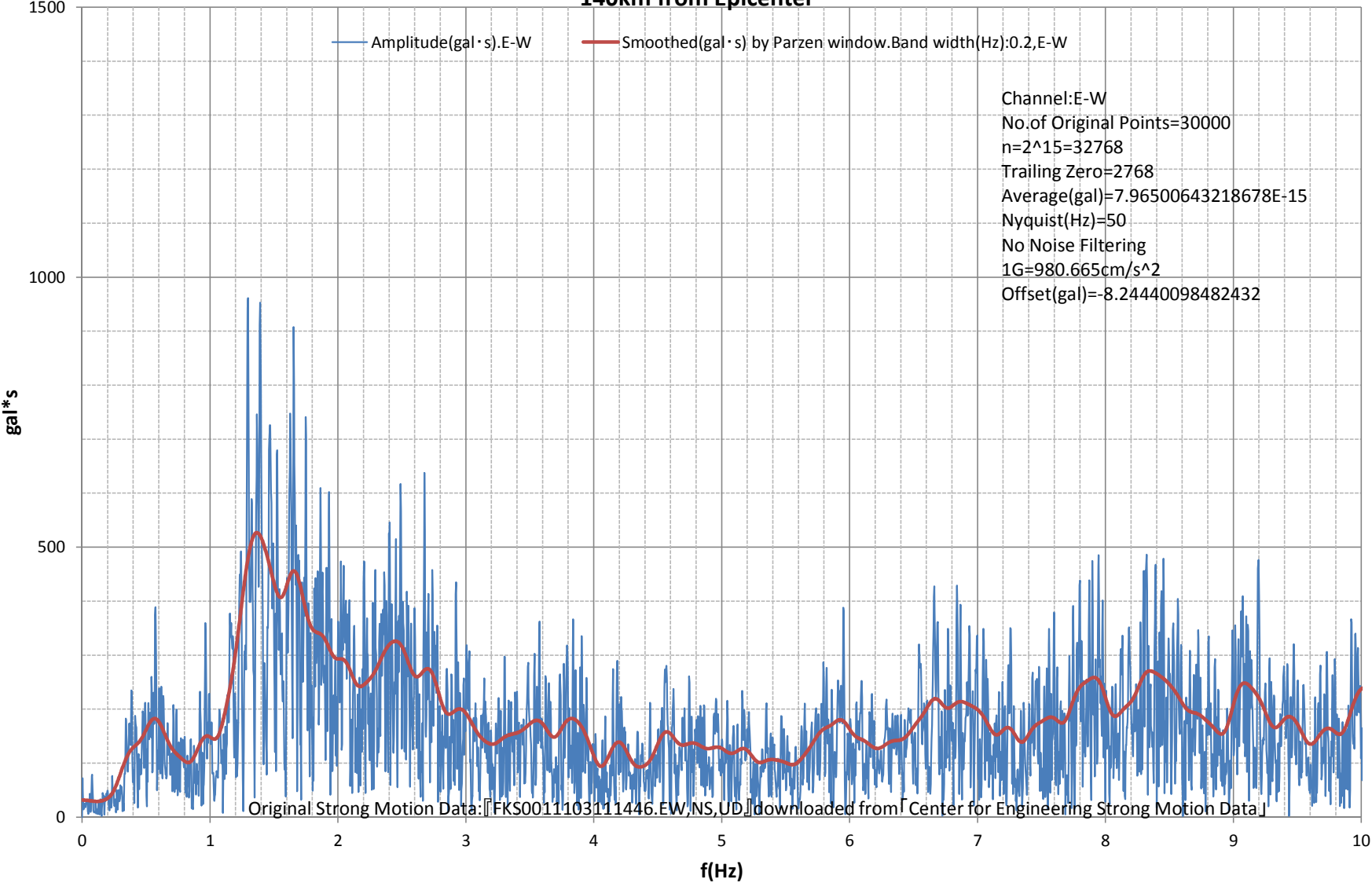


Fourier Amplitude Spectrum:-10(Hz)
M9.0 Japan, Tohoku Earthquake of 11 Mar 2011
Station:SOHMA-FKS001. 37.7949N,140.9196E.Google Maps URL:<http://g.co/maps/tc5mm>
140km from Epicenter



Fourier Amplitude Spectrum:-10(Hz)
M9.0 Japan, Tohoku Earthquake of 11 Mar 2011
Station:SOHMA-FKS001. 37.7949N,140.9196E.Google Maps URL:<http://g.co/maps/tc5mm>
140km from Epicenter



Fourier Amplitude Spectrum:-10(Hz)
M9.0 Japan, Tohoku Earthquake of 11 Mar 2011
Station:SOHMA-FKS001. 37.7949N,140.9196E.Google Maps URL:<http://g.co/maps/tc5mm>
140km from Epicenter

